

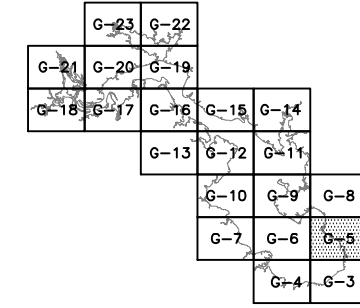
CAD FILE NUMBER 06-3645-E7

CHECKED BY APPROVED BY

C.L.M. 01/11/08

DRAWN BY

PLOT 1:1



KEY PLAN
(N.T.S.)



SURVEYORS STATEMENT:
 I HERBY STATE THAT THE LAKE LIVINGSTON PROJECT BOUNDARY DELINEATION FOR THE LAKE LIVINGSTON HYDROELECTRIC PROJECT AS SHOWN ON THIS EXHIBIT "G" IS DEVELOPED WITHIN REASONABLE ACCURACIES AS REQUIRED IN 18CFR4.41 TO THE GEOGRAPHIC LOCATION BASED ON A GEOGRAPHICAL POSITIONING IN REFERENCE TO USGS QUADRANGLE MAPPING WITHIN ±40 FEET. THE LAKE LIVINGSTON DOCUMENTED PROJECT BOUNDARY LINE WAS ADJUSTED AND/OR ROTATED TO BEST FIT WITH THE USGS QUADRANGLE MAP FEATURES GRAPHICALLY AND WAS NOT FIELD SURVEYED.

BY: _____ DATE: _____

- REFERENCES:**
1. USGS TOPOGRAPHIC MAP 7.5 MIN. SERIES, BLANCHARD, TX QUADRANGLE, DATED: 1960, PHOTO REVISED: 1972, SCALE: 1"=24,000', GRID NORTH: 1°03'/19 MILS, MAGNETIC NORTH 7°/124 MILS.
 2. USGS TOPOGRAPHIC MAP 7.5 MIN. SERIES, LIVINGSTON, TX QUADRANGLE, DATED: 1984, SCALE: 1"=24,000', GRID NORTH: 0°59'/17 MILS, MAGNETIC NORTH: 5°/98 MILS.

PROJECT BOUNDARY

PROJECTION: TEXAS STATE PLANES, CENTRAL ZONE DATUM: NAD83



PROJECT: LAKE LIVINGSTON HYDROELECTRIC PROJECT	DRAWING: EXHIBIT G-5
PREPARED FOR: EAST TEXAS ELECTRIC COOPERATIVE	FERC NO.: P-XXXX-XXXX
Paul C. Rizzo Associates, Inc. CONSULTANTS	SCALE: 1"=1000' DATE: 01-11-08

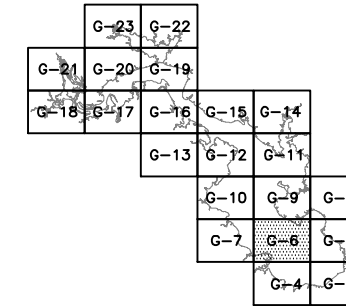
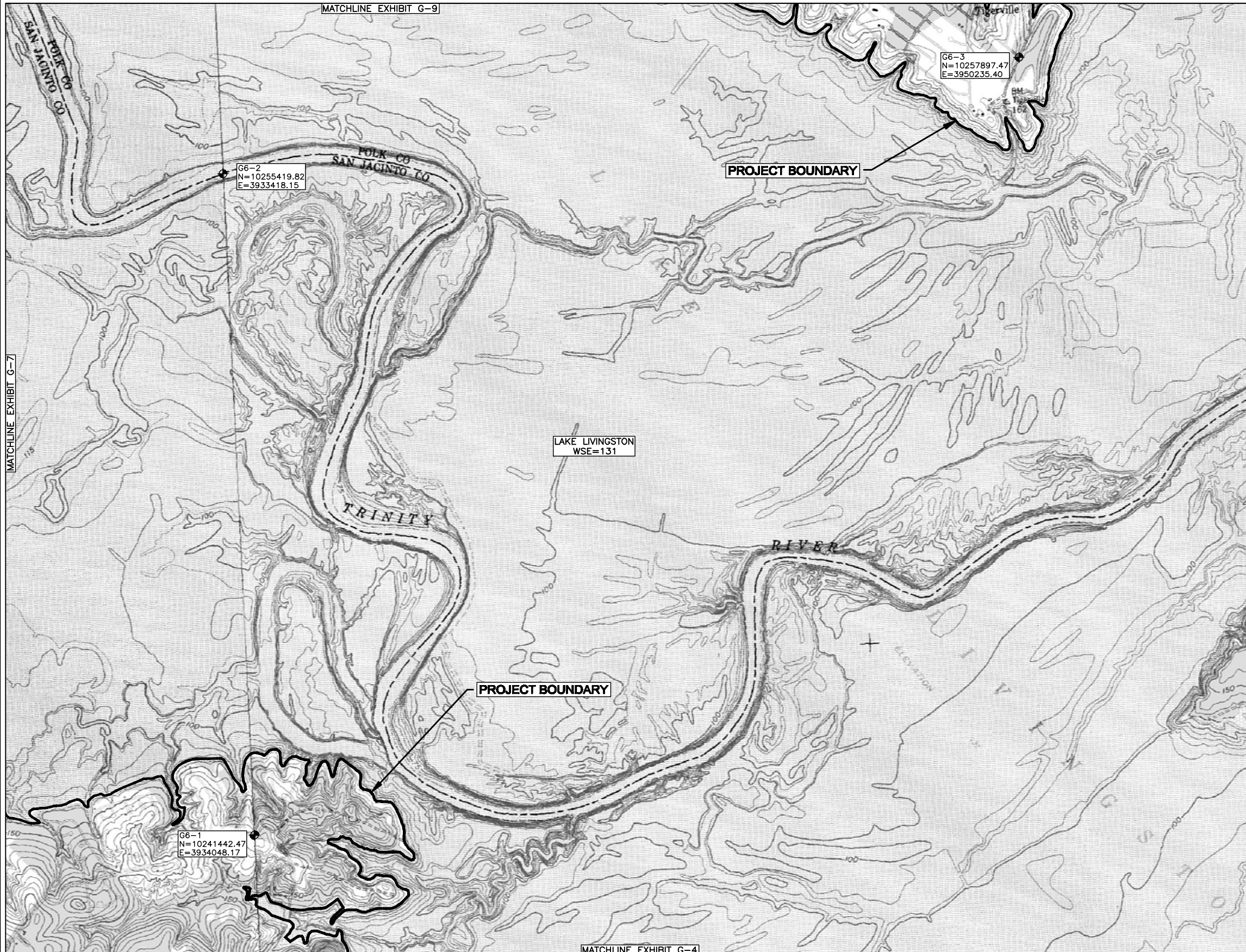
CAD FILE NUMBER 06-3645-E8

CHECKED BY
07/11/08

APPROVED BY

DRAWN BY

PLOT 1:1



KEY PLAN
(N.T.S.)

SURVEYORS STATEMENT:

I HERBY STATE THAT THE LAKE LIVINGSTON PROJECT BOUNDARY DELINEATION FOR THE LAKE LIVINGSTON HYDROELECTRIC PROJECT AS SHOWN ON THIS EXHIBIT "G" IS DEVELOPED WITHIN REASONABLE ACCURACIES AS REQUIRED IN 18CFR4.41 TO THE GEOGRAPHIC LOCATION BASED ON A GEOGRAPHICAL POSITIONING IN REFERENCE TO USGS QUADRANGLE MAPPING WITHIN ±40 FEET. THE LAKE LIVINGSTON DOCUMENTED PROJECT BOUNDARY LINE WAS ADJUSTED AND OR ROTATED TO BEST FIT WITH THE USGS QUADRANGLE MAP FEATURES GRAPHICALLY AND WAS NOT FIELD SURVEYED.

BY: _____ DATE: _____


REFERENCES:

1. USGS TOPOGRAPHIC MAP 7.5 MIN. SERIES, BLANCHARD, TX QUADRANGLE, DATED: 1960, PHOTO REVISED: 1972, SCALE: 1"=24,000', GRID NORTH: 1'03"/19 MILS, MAGNETIC NORTH 7°/124 MILS.
2. USGS TOPOGRAPHIC MAP 7.5 MIN. SERIES, STEPHEN CREEK, TX QUADRANGLE, DATED: 1960, PHOTO REVISED 1972, SCALE: 1"=24,000', GRID NORTH: 1'07"/20 MILS, MAGNETIC NORTH: 7½"/133 MILS.

PROJECT BOUNDARY

PROJECTION: TEXAS STATE PLANES, CENTRAL ZONE DATUM: NAD83



PROJECT: LAKE LIVINGSTON HYDROELECTRIC PROJECT	DRAWING: EXHIBIT G-6
PREPARED FOR: EAST TEXAS ELECTRIC COOPERATIVE	FERC NO.: P-XXXX-XXXX
 Paul C. Rizzo Associates, Inc. CONSULTANTS	SCALE: 1"=1000' DATE: 01-11-08

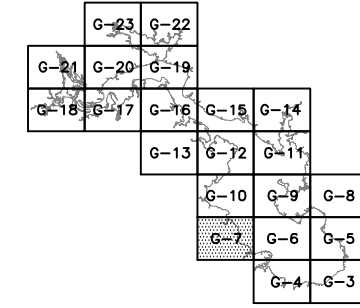
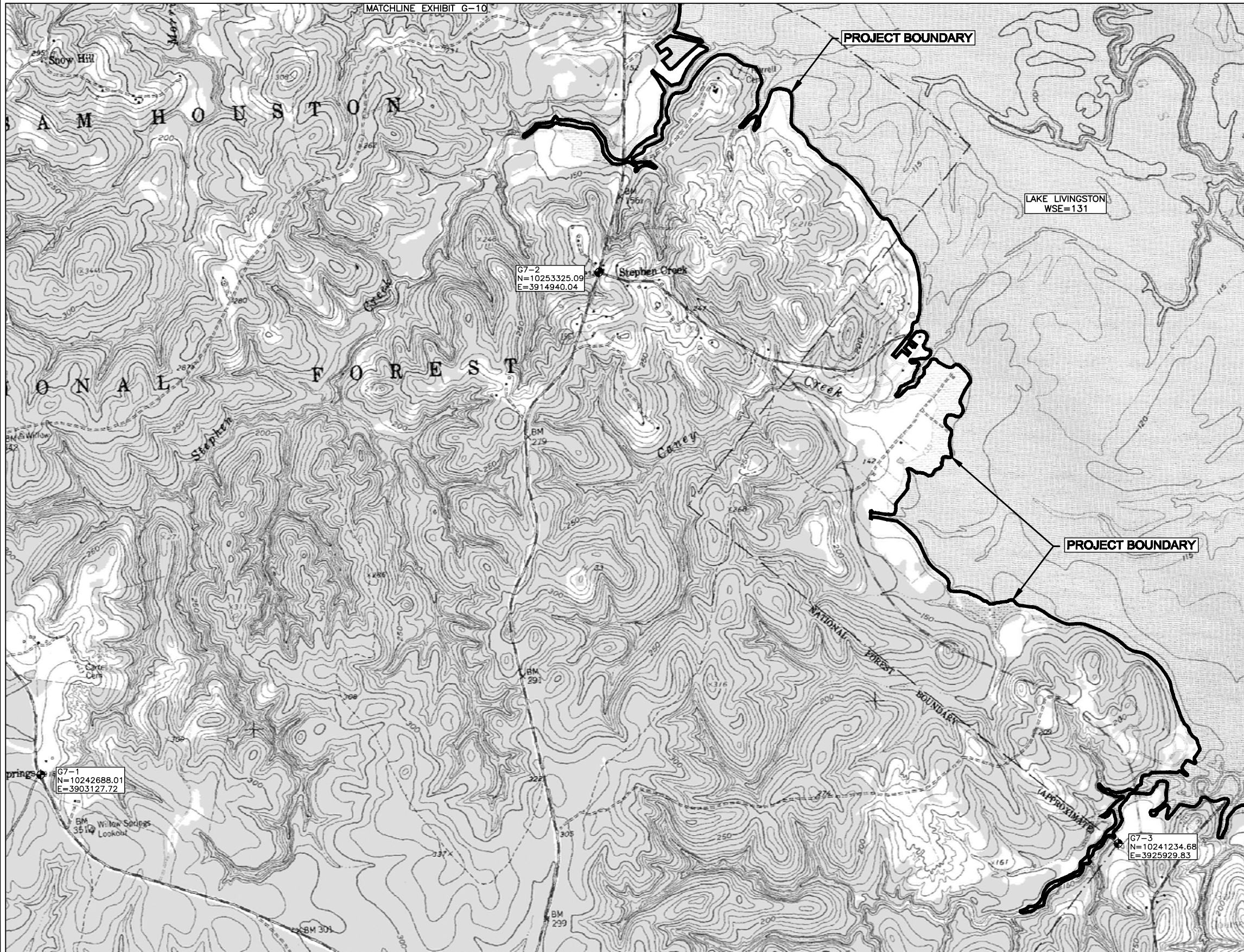
CAD FILE NUMBER 06-3645-E9

CHECKED BY APPROVED BY

C.L.M. 01/11/08

DRAWN BY

PLOT 1:1



KEY PLAN (N.T.S.)



SURVEYORS STATEMENT:
 I HEREBY STATE THAT THE LAKE LIVINGSTON PROJECT BOUNDARY DELINEATION FOR THE LAKE LIVINGSTON HYDROELECTRIC PROJECT AS SHOWN ON THIS EXHIBIT "G" IS DEVELOPED WITHIN REASONABLE ACCURACIES AS REQUIRED IN 18CFR4.41 TO THE GEOGRAPHIC LOCATION BASED ON A GEOGRAPHICAL POSITIONING IN REFERENCE TO USGS QUADRANGLE MAPPING WITHIN ±40 FEET. THE LAKE LIVINGSTON DOCUMENTED PROJECT BOUNDARY LINE WAS ADJUSTED AND/OR ROTATED TO BEST FIT WITH THE USGS QUADRANGLE MAP FEATURES GRAPHICALLY AND WAS NOT FIELD SURVEYED.

BY: _____ DATE: _____

REFERENCES:
 1. USGS TOPOGRAPHIC MAP 7.5 MIN. SERIES, STEPHEN CREEK, TX QUADRANGLE, DATED:1960, PHOTO REVISED 1972, SCALE:1"=24,000', GRID NORTH: 1'07"/20 MILS. MAGNETIC NORTH: 7 1/2"/133 MILS.

PROJECT BOUNDARY

PROJECTION: TEXAS STATE PLANES, CENTRAL ZONE DATUM: NAD83



PROJECT: LAKE LIVINGSTON HYDROELECTRIC PROJECT	DRAWING: EXHIBIT G-7
PREPARED FOR: EAST TEXAS ELECTRIC COOPERATIVE	FERC NO.: P-XXXX-XXXX
Paul C. Rizzo Associates, Inc. CONSULTANTS	SCALE: 1"=1000' DATE: 01-11-08